



Web Links Help

About:

Web Links Version 1.0.0

Copyright @ 2014- 2023 by Mark L. Alberi. All rights reserved.

Web Links is a client to internet HTML links internet web page router scribbler application. It loads any valid HTML link into currently supported browsers. Web Links supports Microsoft Edge, Mozilla Firefox, Google Chrome and CCleaner browsers.

Controls:

See Image1, Web Links Interface GUI.

About:

Gives an application summary about description.

Help:

There are three toolbar pull downs; Website, Local & License.

Website:

Selecting Website will load <https://softglue.net> into the browser to contact softglue for help, view this help document and FAQ's on line. There are no FAQ's for Constitution & Ethics application. It's self-explanatory and all FAQ's are answered in this help document.

Local:

Selecting Local will load this help file into the PC's default pdf reader for reading.

License:

Selecting License will load the softglue user license into wordpad for reading.

List Viewer:

This can display the web list by any one of the three supported columns, Title, description & Web links. The default display format is by title. The list is sorted by in an ascending order. See format below.

Example:

<u>Title</u>	<u>Description</u>
Name1	Type1
Name2	Type2
Etc.	

Note:

The loaded web links file will be loaded in a three column format. The list viewer supports three columns only.



Web Links Settings:

There are nine Web Links settings which can be set. The Web Links settings will be enabled / disabled (dimmed) for certain run-time conditions.

Browsers:

There are four supported browsers Microsoft Edge, Internet Explorer, Mozilla Firefox & Google Chrome. Selecting the browser in the pull down will load the web link into the browser.

Load Web Index:

Selecting this check box enable Web Links to load the next web list from previous secession into the browser.

Save Web Index:

Saves the position of the last URL in the current secession for next time. The default web list index position is always the first URL music file listing.

Save Indexes:

Saves all the Web Links property indexes, except the Reset Web Index, Close Browser and Clear Selected List. The saved indexes will then be loaded the next time Web Links is run.

Reset Indexes:

Resets / deletes the currently saved web Links index for the currently display Web list.

Reset Web Index:

The Reset Indexes switch, resets the Load Web Links Index to the first URL in the open file.

Close Browser:

The close Browser switch will close the currently open Web links browser secession.

Clear Selected Load List:

This switch will clear the selected list in the Web Links list.

Sort Web Links:

Checking this check box will sort & display the opened Web Links list file in ascending order.



File Column Display:

The File Column display supports three tab delimited text file columns; 0-First, 1-Second, 2-Third column. These columns can be used to display the registry search data in the list box and in the list title. The default list title is named "Search List" as shown in Image 2, Web Links GUI.

Web List:

List input is the text file column that is displayed in the list box. By default the list value is the first column 0 of the opened text file. This column value can be changed at any time to the second or third column. For example by changing this value to 2, the third column contents of the opened text file will be displayed in the list box.

List Title:

List Title input will display the inputted column information for that selected item as the list title. The default is "Search List". Changing this value to 0, 1, or 2 will change the list tile to that selected list item column value as a user input. For example, when selecting column 2 as the list title & column 1 as its description, the list title will display the list tile as Column 2 – Column 1 information for that selected item.

Description:

Description input will display the description for that selected item when used in conjunction with the List Title above. For example, when selecting column 1 as the list title & column 2 as its description, the list title will display the list tile as Column 1 – Column 2 information for that selected item.

Web Links Buttons:

There are five user interface buttons: "Open File", "Load List", "Load All", "Search", and "Exit".

File Open:

Music files must be in a tab delimited "Filename.tsv" format file described here. It will not load otherwise. The music file will be displayed by music Artist and Track names in the Music List display window. See Music List Viewer for details. Due to some popular internet Web Links site down load formats, the tsv file must be formatted as follows:

Example:

<u>Title</u>	<u>Description</u>	<u>URL</u>
Name1	Type1	http://www.Web_Page1
Name2	Type2	http://www.Web_Page2
Etc.		

Load List:

The Load List button will Load user defined (custom) selected subset of the complete music list in the music viewer. The user creates this list by clicking the left mouse button over the desired music track in the music viewer. The user can select as many of the tracks from the music list as desired. Whenever a custom Load list is created, the Save Music Index, Reset Music Index, Load Music Index and Update URL Links Web Links settings are disabled, and are inactive. They are enabled when the user deletes the custom Load list. Also, the Clear Selected Load List Web Links setting is enabled so the user can clear / delete the custom Load list with a single click of the left mouse button. See Web Links Settings for complete details of these settings.



Web Links Buttons (Continued):

Load All:

The Load All button Loads all music tracks in the music list viewer, or Loads the all music tracks starting from the Load Music Index file setting. See Load Music Index Web Links setting for details of its usage. The user can Load all tracks while a custom Load List is selected. However, all Web Links settings remain disabled, an inactive as mentioned in the Load List button above.

Search:

This button will search the complete music Load list by the criteria typed in the search text box. All searches can be performed by artist / album and music track. The Search button changes to the Next button once the first search has been performed. Subsequent clicks of the Next button will perform additional searches of the search criteria in the search text box. Changing the search criteria, will rest the Next button to the Search button.

Search Index:

Music list searches are performed interactively as the user type's text in the search text box. The more precise the search phrase the more accurate the search. Once the final search criteria has been reached the user can use the Next button to find additional searches. Clearing the search box resets the Next button to the search button as described in Search.

Exit:

The Exit button & the "X" button in upper right hand corner: closes the Web Links application.

Image 1:

Web Links Interface GUI:

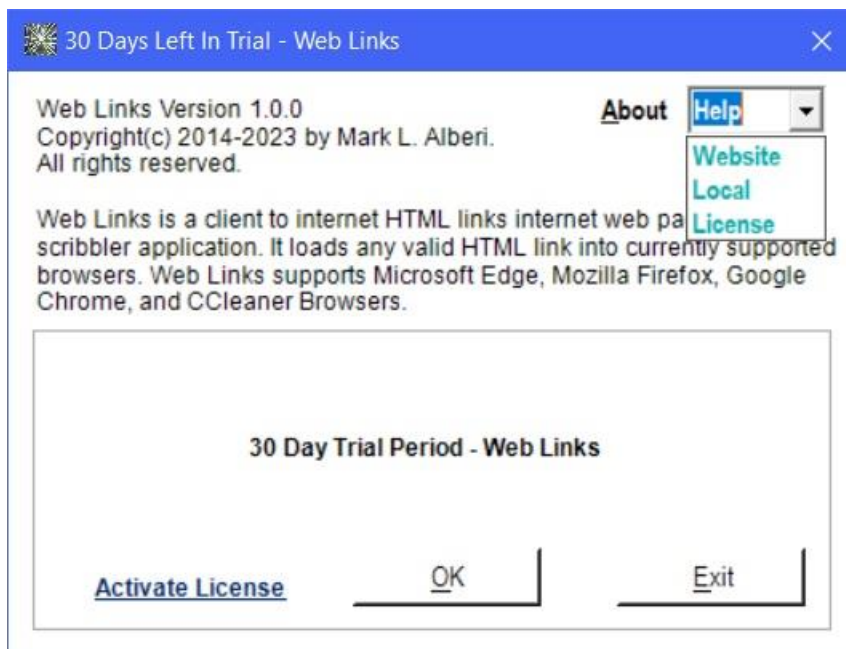




Image 2:

Web Links GUI:

