



# Virus & Threat Scan Command Line Extension Help Guide

## ABOUT

Virus & Threat Scan Command Line Extension Version 1.0.0

Copyright (c) 2015-2024 by Mark L. Alberi. All rights reserved.

## SYNOPSIS

Windows platform extension for Windows Defender and Microsoft Security Essentials command line application MpCmdRun.exe.

## SYNTAX

[Full File Path]/VTCmdScan [<Parameter String [ ]>]

## DESCRIPTION

The Virus Threat Scan command line VTCmdScan.exe executable is an application extension of the Windows Defender and Microsoft Security Essentials command line application MpCmdRun.exe. Its purpose is to make it much easier for the IT professional to implement the Windows Defender and Microsoft Security Essentials command line application MpCmdRun.exe into their own network maintenance scripts; and to provide a windows security safe alternative command line virus and threat extension application to the existing Microsoft virus and threat command line application MpCmdRun.exe. It runs from a proprietary VB script command shell executable.

Virus Threat Scan Extension (VTSE) is not a replacement for Windows Defender or Microsoft Security Essentials or any third party anti-virus & malware threat protection tools. It is primarily considered a network administration supplement tool. Also, primary purpose is an emergency virus threat scan in command line safe mode for the most hostile & infectious virus & malware threats as the first defense against having to reimage the hard drive. Also, MpCmdRun.exe can identify virus threats that can reside in memory during a hard drive formatting & reminding and redeploy themselves after the reimage is complete. IT administrators have always had their own form of VTSE. MpCmdRun.exe is a formalized command line application alternative. There are future plans for a network visual basic, VB.Net shell version to be available. As of the date of this release, VTSE only supports standalone client virus & malware scanning.

The reduced version supports only Windows Defender, virus threat scanning and virus scan data file updating.



## CONTROLS

See Images 1 & 2, Virus Threat Scan GUI Interface.

## ABOUT

Gives an application summary about description.

## HELP

There are three toolbar pull downs; Website, Local & License.

## WEBSITE

Selecting Website will load <https://softglue.net> into the browser to contact softglue for help, view this help document and FAQ's on line. There are no FAQ's for Constitution & Ethics application. It's self-explanatory and all FAQ's are answered in this help document.

## LOCAL

Selecting Local will load this help file into the PC's default pdf reader for reading.

## LICENSE

Selecting License will load the softglue user license into wordpad for reading.

## PARAMETERS

Scan Type <Integer> - Required

Windows Defender and Microsoft Security Essentials advanced scan settings.

Default Scan: 0

Quick Scan: 1

Full Scan: 2

Custom Folder and Files Scan: 3

Note: Typing question mark (?) or noting will take the user through a command line question decision flow chart to start VTSE.

For Example: Perform quick scan.

[Full File Path]/ VTCmdScan 1

Threat Protection Update <String> - Optional

Updates the Update files.

For Example: Perform quick scan with virus & threat update.

[Full File Path]/VTCmdScan 1 -update



## PARAMETERS (Continued)

### Scan Type (Continued)

#### Custom Scan <String> - Optional

Update, specific root folder and sub folders and files, or specific File.

For Example: Perform custom folder scan with virus & threat update.

[Full File Path]/VTCmdScan 3 -update “[Full File Path]/My Folder”

Note 1: To scan file paths with spaces, it is required to put double quotes around complete file path.

Note 2: Use –noupdate switch if no virus file update is performed with custom Scan Type 3

#### Sleep Switch - Optional

Put computer a sleep after virus & Threat scan completes.

For Example: Perform Full scan with virus & threat update and put computer to sleep when scan completes.

[Full File Path]/VTCmdScan 2 -update -sleep

#### Hide Switch - Optional

Hide switch -hide will hide the command & Cmd Line console when VTSE is started and will exit automatically once scan is complete.

-hide = “” Not set will show the command console & automatically close upon exit.

For Example: Hide command console, perform quick scan and put computer to sleep when scan completes.

[Full File Path]/VTCmdScan 1 –hide –sleep

#### Security Scan Switch - Optional

The Security Scan Switch –sscan will automatically stop all running command shell active processes & automatically exit.



Image1:

### Virus Threat Scan:

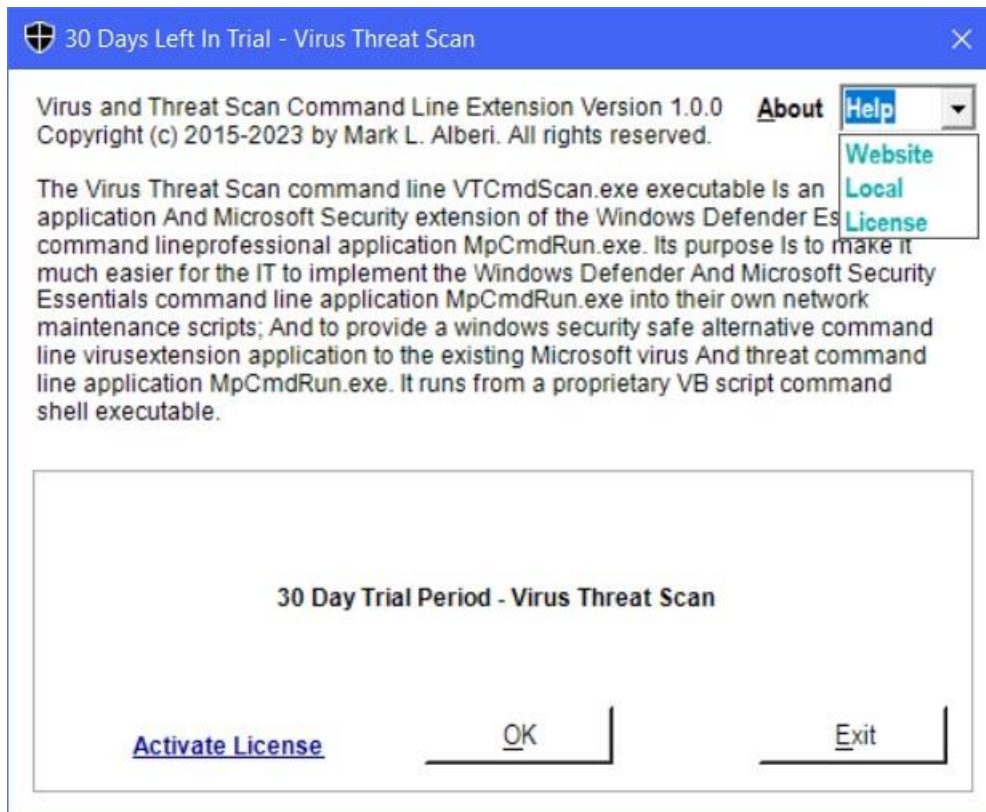




Image2:

### Virus Threat Scan Reduced Version:

